

Polyfab Pro™ Shade Sail Hardware

2018




polyfab™
USA

POLYFAB PRO™ SHADE SAIL HARDWARE

Polyfab Pro™ Shade Sail Hardware, which comes from manufacturers of only the highest quality fittings, have been field tested and used by fabricators in Australia for the finest look of their finished shade products. We source these products from established companies in Thailand, Australia and the United States and they are designed to offer the longest life available. That is part of our commitment to the Shade Sail industry from Polyfab USA, "The Shade Cloth People".

Some of the features of our hardware include:

- Forged bow shackles, not cast
- 316 Marine Grade stainless steel on most of the parts (except where noted)
- Welded D and Tri Rings



This premium line of marine grade AISI 316/304 stainless steel and other steel hardware is recommended for use in tension shade structures such as hip and ridge and tension membrane shade sails in conjunction with HDPE knitted shadecloth supplied by Polyfab USA LLC, or equivalent quality fabric.

The finished structure needs to be properly engineered by a professional engineer and installed by a qualified contractor in accordance with local building codes.

It is the responsibility of the fabricator within these parameters to determine the proper hardware for a particular installation.

CARE & MAINTENANCE PROGRAM

The common rule for keeping stainless steel in its original, pristine condition is to "clean it when it's dirty". For regular cleaning start with a soft cloth and clean warm water or use ordinary soap or a mild, diluted detergent or diluted ammonia in warm water; apply with a soft cloth or synthetic sponge. Rinse well, dry with a soft cloth or drip dry. Occasionally the use of a mild household cleaner, a fine synthetic scourer or a brush with nylon bristles may be used. Regular cleaning will often remove heavy soiling and accumulated staining.

SUGGESTIONS:

- Routine, simple and gentle cleaning
- Use only the above mentioned cleaning products
- Employ repeated routine cleaning rather than an aggressive single one

WHAT NOT TO DO:

- Do not use coarse abrasive powders
- Do not use metallic scourers
- Do not use "Silver Cleaners"
- Do not subject stainless steel to "abnormal" use

Contact your dealer for more information:
www.PolyfabUSA.com

WHAT MAKES THE DIFFERENCE?

Greater Corrosion Resistance

Stainless is not stain 'free'.
With an additional process known as
'Passivation' it is possible to increase the
resistance the products need to stay cleaner
and brighter.

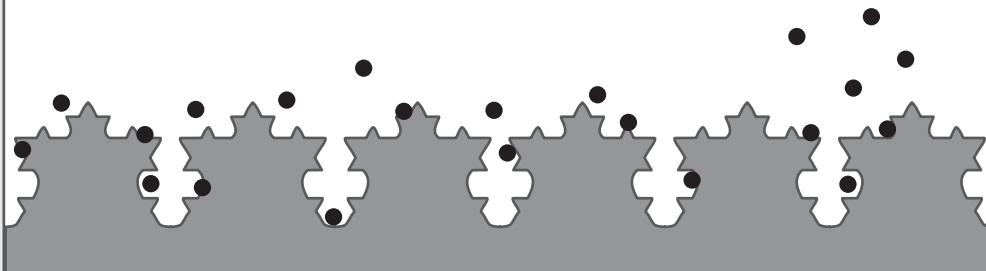
Polyfab USA 316 stainless steel
is passivated as standard.



Active Chemical Surfaces

An 'activated' surface offers a large surface area where chemical reactions can occur leading to discoloring and corrosion.

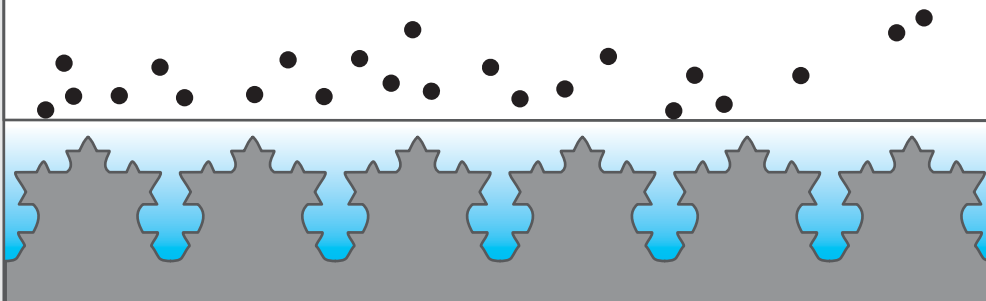
Chemically active solid
Reactants



Active Chemical Surfaces

A 'passivation' layer, shown in light blue, blocks the reactants (black particles) from reaching the active (grey) surface below.

Chemically active solid
Passivation layer
Reactants



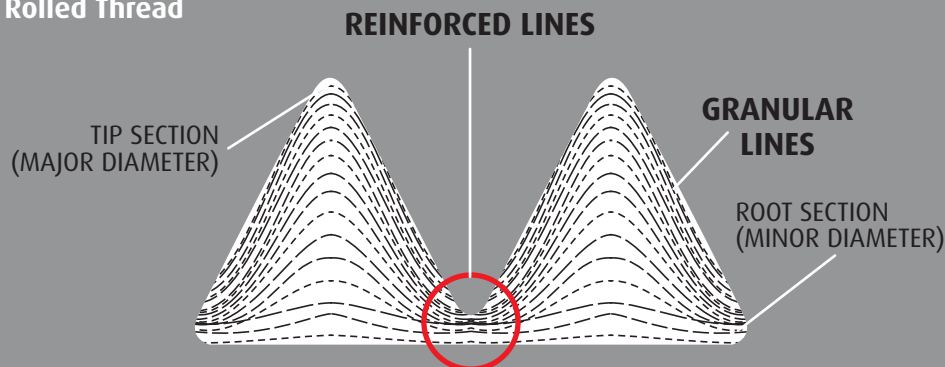
Rolled Threads

Rolled threads offer an advantage to threads that are cut - providing a stronger connection and reducing the risk of threads binding or galling when applying tension under load.

Polyfab 316 stainless steel is roll threaded as standard.

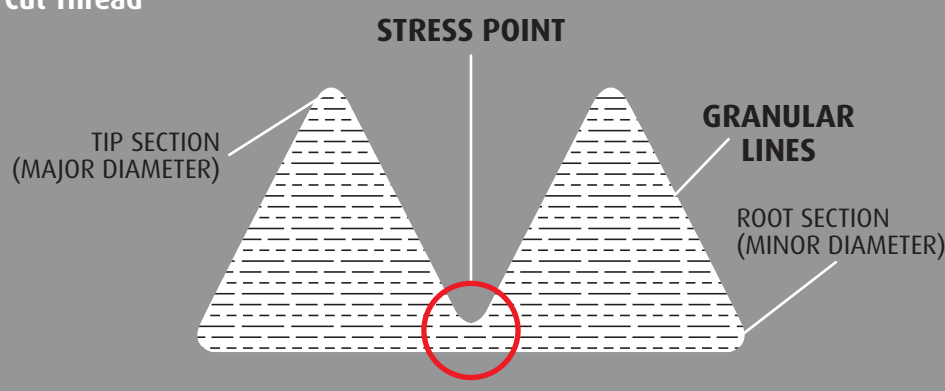


Rolled Thread



Granular lines are not broken but enhanced in the tip section (major diameter) and root section (minor diameter) of a rolled thread process, making a rolled thread resistance to fatigue before tensile stress can be formed.

Cut Thread



Granular lines of a cut thread are completely cut through leaving the threaded roots (minor diameter) exposed as high stress points for tensile stress buildup.

TURNBUCKLES

Standard safety factor for working load is 1/4 of breaking load



It is recommended that an anti seize product be used on turnbuckle threads to minimize binding.

Made from high quality 316 Marine grade stainless steel.

ITEM #	DESCRIPTION		WIDTH OF JAW OPENING	HEIGHT OF JAW OPENING	TOTAL LENGTH CLOSED	TOTAL LENGTH FULL OPEN	BREAK LOAD
		Thread	mm/in	mm/in	mm/in	mm/in	kg/lbf
SS-TBJJ-08	8mm Polyfab Pro Turnbuckle Jaw/Jaw AISI 316	M8	11/0.43	11/0.43	195/7.7	290/11.4	2200/4850
SS-TBJJ-10	10mm Polyfab Pro Turnbuckle Jaw/Jaw AISI 316	M10	12/0.47	12/0.47	235/9.3	362/14.3	3450/7605
SS-TBJJ-12	12mm Polyfab Pro Turnbuckle Jaw/Jaw AISI 316	M12	15/0.59	21/0.83	320/12.4	485/19.1	5000/11023



It is recommended that an anti seize product be used on turnbuckle threads to minimize binding.

Made from high quality 316 Marine grade stainless steel.

ITEM #	DESCRIPTION		INSIDE EYE DIAMETER	EYE WIRE THICKNESS	TOTAL LENGTH CLOSED	TOTAL LENGTH FULL OPEN	BREAK LOAD
		Thread	(mm/in)	(mm/in)	(mm/in)	(mm/in)	(kg/lbf)
SS-TBEE-08	8mm Polyfab Pro Turnbuckle Eye/Eye AISI 316	M8	14/0.55	8/0.31	210/8.3	302/11.9	2300/5070
SS-TBEE-10	10mm Polyfab Pro Turnbuckle Eye/Eye AISI 316	M10	18/0.71	10/0.39	257/10.1	370/14.6	3100/6834
SS-TBEE-12	12mm Polyfab Pro Turnbuckle Eye/Eye AISI 316	M12	20/0.79	12/0.47	323/12.7	492/19.4	4400/9700

TURNBUCKLES

Standard safety factor for working load is 1/4 of breaking load



It is recommended that an anti seize product be used on turnbuckle threads to minimize binding.

Made from high quality 316 Marine grade stainless steel.

ITEM #	DESCRIPTION		WIDTH OF JAW OPENING	HEIGHT OF JAW OPEN- ING-PIN CTR TO TOGGLE CTR	LENGTH CLOSED PIN CTR TO PIN CTR	LENGTH FULL OPEN-PIN CTR TO PIN CTR	BREAK LOAD
		Thread	(mm/in)	(mm/in)	(mm/in)	(mm/in)	(kg/lbf)
SS-TBST-12	12mm(1/2") Polyfab Pro Closed-Body Turnbuckle with Swivel Toggle Ends AISI 316	M12	13/0.51	30.5/1.20	258/10.16	390/15.35	3700/8157
SS-TBST-16	16mm(5/8") Polyfab Pro Closed-Body Turnbuckle with Swivel Toggle Ends AISI 31	M16	17/0.67	40.5/1.59	335/13.19	500/19.69	6950/15322



It is recommended that an anti-seize compound be used on all threaded connections to avoid “thread galling”, or the binding of threads under load. This condition, though lessened, is still a possibility especially if overloaded. This is the nature of stainless steel and is not considered a defect, and Polyfab is not responsible if this occurs.

SHACKLES

Standard safety factor for working load is 1/4 of breaking load



Made from high quality 316 Marine grade stainless steel.

ITEM #	DESCRIPTION	PIN THICKNESS - A	WIDTH OF OPENING - B	LENGTH - L	BREAK LOAD
		(mm/in)	(mm/in)	(mm/in)	(kg/lbf)
SS-SBF-08	8mm Polyfab Bow Shackle Forged AISI 316	8/0.31	16/0.63	34/1.34	3500/7716
SS-SBF-10	10mm Polyfab Bow Shackle Forged AISI 316	10/0.39	20/0.79	42.5/1.67	5500/12125
SS-SBF-12	12mm Polyfab Bow Shackle Forged AISI 316	12/0.47	24/0.94	51/2.01	7500/16535



Made from high quality 316 Marine grade stainless steel.

ITEM #	DESCRIPTION	PIN THICKNESS - A	WIDTH OF OPENING - B	LENGTH - L	BREAK LOAD
		(mm/in)	(mm/in)	(mm/in)	(kg/lbf)
SS-SD-08	8mm Polyfab Dee Shackle AISI 316	8/0.31	16/0.63	32/1.26	2500/5512
SS-SD-10	10mm Polyfab Dee Shackle AISI 316	10/0.39	20/0.79	40/1.57	4100/9039
SS-SLD-08	8mm Polyfab Long Dee Shackle AISI 316	8/0.31	16/0.63	64/2.52	2500/5512
SS-SLD-10	10mm Polyfab Long Dee Shackle AISI 316	10/0.39	20/0.79	80/3.15	3500/7716



Made from high quality 316 Marine grade stainless steel.

ITEM #	DESCRIPTION	PIN THICKNESS - A	WIDTH OF OPENING - B	LENGTH - L	BREAK LOAD
		(mm/in)	(mm/in)	(mm/in)	(kg/lbf)
SS-SLT-08	8mm Polyfab Long Twisted Shackle AISI 316	8/0.31	15.5/0.61	65/2.56	2800/6173
SS-SLT-10	10mm Polyfab Long Twisted Shackle AISI 316	10/0.39	20/0.79	81/3.19	4600/10141

EYE NUTS & EYE BOLTS

Standard safety factor for working load is 1/4 of breaking load



Made from high quality 316 Marine grade stainless steel.

ITEM #	DESCRIPTION		LENGTH	HEIGHT	WIRE DIAMETER	BREAK LOAD
		Thread	L (mm/in)	A (mm/in)	D (mm/in)	(kg/lbf)
SS-EYN-08	8mm Polyfab Eye Nut AISI 316	M8	32/1.26	20/0.79	6/0.24	1300/2866
SS-EYN-10	10mm Polyfab Eye Nut AISI 316	M10	40/1.57	25/0.98	8/0.31	2600/5732
SS-EYN-12	12mm Polyfab Eye Nut AISI 316	M12	49/1.93	30/1.18	10/0.39	3500/7716



Made from high quality 316 Marine grade stainless steel.

ITEM #	DESCRIPTION		LENGTH	HEIGHT	WIRE DIAMETER	THREAD LENGTH	BREAK LOAD
		Thread	L (mm/in)	A (mm/in)	D (mm/in)	L1 (mm/in)	(kg/lbf)
SS-EYBC-08	8mm Polyfab Eye Bolt w/Collar AISI 316	M8	15/0.59	20/0.79	8/0.31	36/1.42	2000/4409
SS-EYBC-10	10mm Polyfab Eye Bolt w/Collar AISI 316	M10	19/0.75	25/0.98	8/0.31	45/1.77	2600/5732
SS-EYBC-12	12mm Polyfab Eye Bolt w/Collar AISI 316	M12	23/0.91	30/1.18	12/0.47	53/2.09	4500/9921



EYE NUTS & EYE BOLTS

Standard safety factor for working load is 1/4 of breaking load



It is recommended that an anti seize product be used on threads to minimize binding.

Made from high quality 316 Marine grade stainless steel.

ITEM #	DESCRIPTION		THREAD LENGTH	INSIDE HOLE DIAMETER	WIRE DIAMETER	BREAK LOAD
		Thread	L (mm/in)	A (mm/in)	D (mm/in)	(kg/lbf)
SS-EYB-08100	8 x 100mm Polyfab Eye Bolt, Nut & 2 Washers AISI 316	M8	100/3.9	17/0.67	8/0.31	1800/3968
SS-EYB-08120	8 x 120mm Polyfab Eye Bolt, Nut & 2 Washers AISI 316	M8	120/4.7	17/0.67	8/0.31	1800/3968
SS-EYB-10120	10 x 120mm Polyfab Eye Bolt, Nut & 2 Washers AISI 316	M12	120/4.7	21/0.83	10/0.39	2400/5291

EYE NUT BOLTS



It is recommended that an anti seize product be used on threads to minimize binding.

Made from high quality 316 Marine grade stainless steel.

ITEM #	DESCRIPTION		THREAD LENGTH	INSIDE HOLE DIAMETER	WIRE DIAMETER	OUTSIDE HOLE DIAMETER	BREAK LOAD
		Thread	L (mm/in)	A (mm/in)	D (mm/in)	L1 (mm/in)	(kg/lbf)
SS-EYNB-10100	10 x 100mm Polyfab Eye Nut Bolt, Nut & Washer AISI 316	M10	100/3.94	25/0.98	8/0.31	40/1.57	2600/5732
SS-EYNB-10160	10 x 160mm Polyfab Eye Nut Bolt, Nut & Washer AISI 316	M10	160/6.30	25/0.98	8/0.31	40/1.57	2600/5732
SS-EYNB-12150	12 x 150mm Polyfab Eye Nut Bolt, Nut & Washer AISI 316	M12	150/5.91	30/1.18	10/0.39	50/1.97	3500/7716
SS-EYNB-12165	12 x 165mm Polyfab Eye Nut Bolt, Nut & Washer AISI 316	M12	165/6.50	30/1.18	10/0.39	50/1.97	3500/7716
SS-EYNB-12200	12 x 200mm Polyfab Eye Nut Bolt, Nut & Washer AISI 316	M12	200/7.87	30/1.18	10/0.39	50/1.97	3500/7716

SCREW EYES



Pull out strengths are dependant on the strength of the wood into which the eyes are screwed. Therefore, Polyfab USA is NOT responsible for screw eyes pulling out.

Made from high quality 316 Marine grade stainless steel.

ITEM #	DESCRIPTION		WIRE DIAMETER	SCREW LENGTH	INSIDE HOLE DIAMETER	WIRE DIAMETER	OUTSIDE HOLE DIAMETER
		Size	D (mm/in)	L (mm/in)	A (mm/in)	H (mm/in)	D1 (mm/in)
SS-EYS-880	8 x 80mm Polyfab Welded Screw Eye AISI 316	8x80	8/0.31	80/3.15	16/0.63	8/0.31	32/1.26
SS-EYS-1080	10 x 80mm Polyfab Welded Screw Eye AISI 316	10x80	10/0.39	80/3.15	20/0.79	10/0.39	40/1.57
SS-EYS-12100	12 x 100mm Polyfab Eye Nut Screw Eye AISI 316	12x100	12/0.47	100/3.94	27/1.06	12/0.47	50/1.97

LOCK NUTS & HEX NUTS



It is recommended that an anti seize product be used on threads to minimize binding.

Made from high quality 316 Marine grade stainless steel or brass as noted.

ITEM #	DESCRIPTION	Thread
SS-LNN-08	8mm Polyfab Nylon Lock Nuts AISI 316	M8
SS-LNN-10	10mm Polyfab Nylon Lock Nuts AISI 316	M10
SS-LNN-12	12mm Polyfab Nylon Lock Nuts AISI 316	M12
SS-HN-08	8mm Polyfab Hex Nut Stainless Steel	M8
SS-HN-10	10mm Polyfab Hex Nut Stainless Steel	M10
BR-HN-08	8mm Polyfab Hex Nut BRASS	M8
BR-HN-10	10mm Polyfab Hex Nut BRASS	M10

TRIANGLES & RINGS

Standard safety factor for working load is 1/4 of breaking load



Made from high quality 316 Marine grade stainless steel.

ITEM #	DESCRIPTION	WIRE DIAMETER	WEBBING SIZE	BREAK LOAD
		D (mm/in)	L (mm/in)	(kg/lbf)
SS-TRI-06	6 X 50mm Polyfab Triangle AISI 316	6/0.24	50/1.97	2000/4409
SS-TRI-08	8 X 50mm Polyfab Triangle AISI 316	8/0.31	50/1.97	2800/6173



Made from high quality 316 Marine grade stainless steel.

ITEM #	DESCRIPTION	WIRE DIAMETER	WEBBING SIZE	BREAK LOAD
		D (mm/in)	L (mm/in)	(kg/lbf)
SS-DRG-06	6 X 50mm Polyfab Dee Ring AISI 316	6/0.24	50/1.97	1800/3968
SS-DRG-08	8 X 50mm Polyfab Dee Ring AISI 316	8/0.31	50/1.97	2800/6173

TRIANGLES & RINGS

Standard safety factor for working load is 1/4 of breaking load



Made from high quality 316 Marine grade stainless steel.

ITEM #	DESCRIPTION	LENGTH OF FLAT SIDE	TOTAL HEIGHT	GROOVE HEIGHT	GROOVE DIAMETER	ARCH WIDTH	BREAK LOAD
		A (mm/in)	L (mm/in)	D1 (mm/in)	D (mm/in)	H (mm/in)	(kg/lbf)
SS-DRHD-05	5 x 50 mm Polyfab Pro Easy-Hold Dee Ring to hold cable up to 5 mm AISI 316	50.5/1.99	55.5/2.19	9/0.35	5.5/0.22	8/0.31	3310/7297
SS-DRHD-08	8 x 50 mm Polyfab Pro Easy-Hold Dee Ring to hold cable up to 8 mm AISI 316	52/2.05	62/2.44	13/0.51	9/0.35	12.5/0.49	4470/9855
SS-DRHD-10	10 x 55 mm Polyfab Pro Easy-Hold Dee Ring to hold cable up to 10 mm AISI 316 (NEW)	55/2.17	68.5/2.70	15/0.59	11/0.43	15/0.59	6190/13647



DEE RING THIMBLES

Standard safety factor for working load is 1/4 of breaking load



Made from high quality 316 Marine grade stainless steel.

ITEM #	DESCRIPTION		INSIDE THIMBLE DIAMETER	TOTAL HEIGHT	LENGTH OF FLAT SIDE	GROOVE DIAMETER	OUTSIDE THIMBLE DIAMETER	BREAK LOAD
		Suits Cable (mm)	A (mm/in)	H (mm/in)	L (mm/in)	B (mm/in)	D1 (mm/in)	(kg/lbf)
SS-DRTH-650	6 X 50mm Polyfab Pro Dee Ring Thimble AISI 304	up to 5mm	35/1.38	55/2.17	63/2.48	12.5/0.49	50/1.97	1800/3968
SS-DRTH-850	8 X 50mm Polyfab Pro Dee Ring Thimble AISI 304	up to 6mm	35/1.38	59/2.32	67/2.64	15.5/0.61	50/1.97	2800/6173
SS-DRTH-1065	10 X 65mm Polyfab Pro Dee Ring Thimble AISI 304	up to 10mm	48/1.89	75/2.95	85/3.35	21/0.83	65.5/2.58	5000/11023



SPRING HOOKS

Standard safety factor for working load is 1/4 of breaking load



Made from high quality 316 Marine grade stainless steel.

ITEM #	DESCRIPTION	SMALL END INSIDE DIAMETER	WIRE DIAMETER	OPENING	LENGTH	BREAK LOAD
		B (mm/in)	D (mm/in)	E (mm/in)	L (mm/in)	(kg/lbf)
SS-HKS-08	8mm Polyfab Spring Hook AISI 316	10/0.39	8/0.31	9/0.35	80/3.15	508/1120
SS-HKS-10	10mm Polyfab Spring Hook AISI 316	14/0.55	10/0.39	14/0.55	100/3.94	728/1605

QUICK LINKS



Made from high quality 316 Marine grade stainless steel.

ITEM #	DESCRIPTION	WIRE DIAMETER	LENGTH OF CLOSER	TOTAL LENGTH	LENGTH OF SHORT FLAT SIDE	OPENING	BREAK LOAD
		D (mm/in)	A (mm/in)	L (mm/in)	L1 (mm/in)	B (mm/in)	(kg/lbf)
SS-QLT-06	6mm(1/4") Polyfab Triangle Quick Link AISI 316 (NEW)	6/0.24	20/0.79	56/2.20	47/1.85	7.5/0.30	3000/6613
SS-QLT-10	10mm(13/32") Polyfab Triangle Quick Link AISI 316 (NEW)	10/0.39	30/1.18	87/3.43	66/2.60	12/0.47	8500/18739

WIRE ROPE FITTINGS

Standard safety factor for working load is 1/4 of breaking load



Made from high quality 316 Marine grade stainless steel.

ITEM #	DESCRIPTION	INSIDE WIDTH	LENGTH
		(mm/in)	(mm/in)
SS-WRT-03	Polyfab Thimble for 3.2mm wire rope AISI 316	12/0.47	29/1.14
SS-WRT-05	Polyfab Thimble for 5mm wire rope AISI 316	15/0.59	37/1.46
SS-WRT-06	Polyfab Thimble for 6mm wire rope AISI 316	17/0.67	40/1.57
SS-WRT-08	Polyfab Thimble for 8mm wire rope AISI 304	22/0.87	48/1.89
SS-WRT-10	Polyfab Thimble for 10mm wire rope AISI 304	25/0.98	59/2.32



Made from high quality 316 Marine grade stainless steel.

ITEM #	DESCRIPTION	
		Thread
SS-WRC-03	Polyfab Wire Rope Clamp for 3.2mm wire AISI 316	M3
SS-WRC-05	Polyfab Wire Rope Clamp for 5mm wire AISI 316	M5
SS-WRC-06	Polyfab Wire Rope Clamp for 6mm wire AISI 316	M6
SS-WRC-08	Polyfab Wire Rope Clamp for 8mm wire AISI 316	M8
SS-WRC-10	Polyfab Wire Rope Clamp for 10mm wire AISI 316	M10

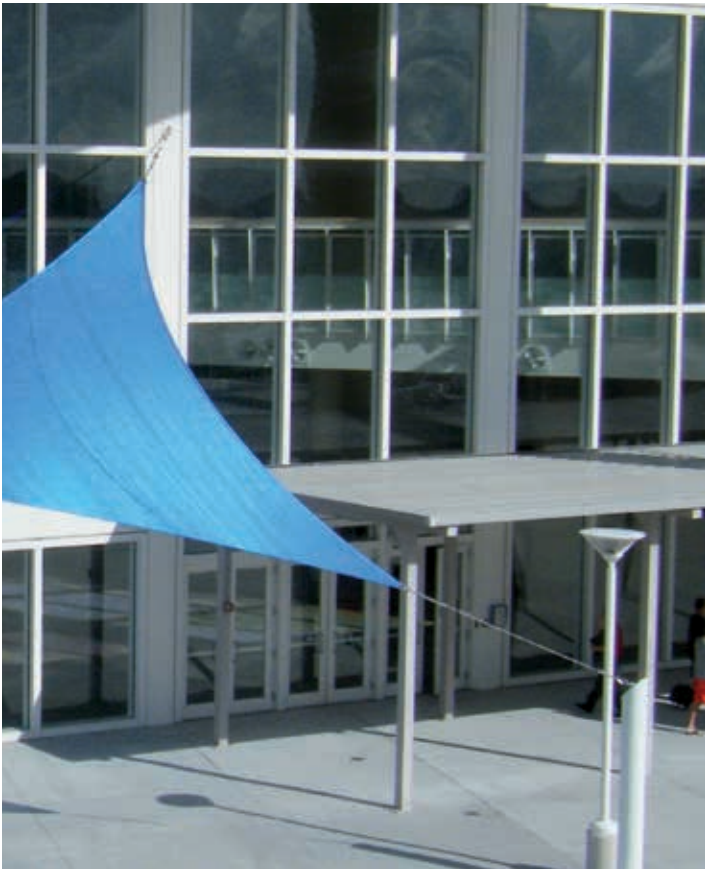
WIRE ROPE FITTINGS

Standard safety factor for working load is 1/4 of breaking load



Made from high quality nickel plated copper, recommended for use with SS wire.

ITEM #	DESCRIPTION	WIDTH	LENGTH	HOLE WIDTH	HEIGHT
		D (mm/in)	L (mm/in)	A (mm/in)	H (mm/in)
NP-WRS-03	Polyfab Swaging Sleeve for 3.2mm wire NPC	7.4/0.29	13/0.51	3.6/0.14	10.5/0.41
NP-WRS-05	Polyfab Swaging Sleeve for 5mm wire NPC	11/0.43	25/0.98	5.5/0.22	17/0.67
NP-WRS-06	Polyfab Swaging Sleeve for 6mm wire NPC	13/0.51	28/1.10	7/0.28	20.5/0.81
NP-WRS-08	Polyfab Swaging Sleeve for 8mm wire NPC	17/0.67	31/1.22	9/0.35	26/1.02



CORNER BRACKETS

Standard safety factor for working load is 1/4 of breaking load



Made from zinc plated steel in the USA.

ITEM #	DESCRIPTION	WIDTH	LENGTH	THICKNESS	COATING	HOLE
		(in)	(in)	(in)		(in)
ZN-CBEX-100	Polyfab External Corner Bracket 100mm Zinc	3	4	3/16	zinc	1/2
ZN-CBIN-100	Polyfab Internal Corner Bracket 100mm Zinc	3	4	3/16	zinc	1/2
ZN-CBEX-150	Polyfab External Corner Bracket 150mm Zinc	3	6	3/16	zinc	1/2
ZN-CBIN-150	Polyfab Internal Corner Bracket 150mm Zinc	3	6	3/16	zinc	1/2
ZN-CBEX-100120	Polyfab External Corner Bracket 100x120mm Zinc	5	4	3/16	zinc	1/2
ZN-CBIN-100120	Polyfab Internal Corner Bracket 100x120mm Zinc	5	4	3/16	zinc	1/2
ZN-CBEX-250	Polyfab External Corner Bracket 250mm Zinc	3	10	3/16	zinc	1/2
ZN-CBIN-250	Polyfab Internal Corner Bracket 250mm Zinc	3	10	3/16	zinc	1/2

WALL PLATES

Standard safety factor for working load is 1/4 of breaking load



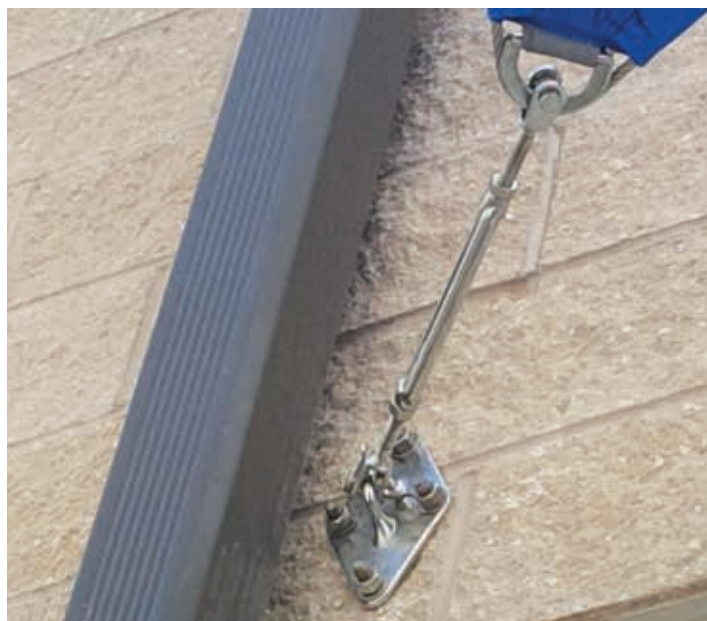
Made from zinc plated steel in the USA.

ITEM #	DESCRIPTION	WIDTH	LENGTH	THICKNESS	COATING	HOLE
		(in)	(in)	(in)		(in)
ZN-WPD-100	Polyfab Diagonal Eye Wall Plate 100mm Zinc	4	4	3/16	zinc	1/2
ZN-WPD-150	Polyfab Diagonal Eye Wall Plate 150mm Zinc	6	6	3/16	zinc	1/2



WALL PLATES & PAD EYES

Standard safety factor for working load is 1/4 of breaking load



Made from high quality 316 Marine grade stainless steel.

ITEM #	DESCRIPTION	PIN DIAMETER	TOTAL LENGTH	TOTAL WIDTH	MINIMUM CLEARANCE BETWEEN PLATE AND SHACKLE	HOLE DIAMETER	MAXIMUM WORKING LOAD
		(mm/in)	(mm/in)	(mm/in)	(mm/in)	(mm/in)	(kg/lbf)
SS-WPD-180	Polyfab Pro Diamond Wall Plate with 10mm Shackle Eye 180 x 110mm AISI 316 Electro Polished	10/0.39	180/7.09	110/4.33	19/0.75	12.5/0.49	1725/3803

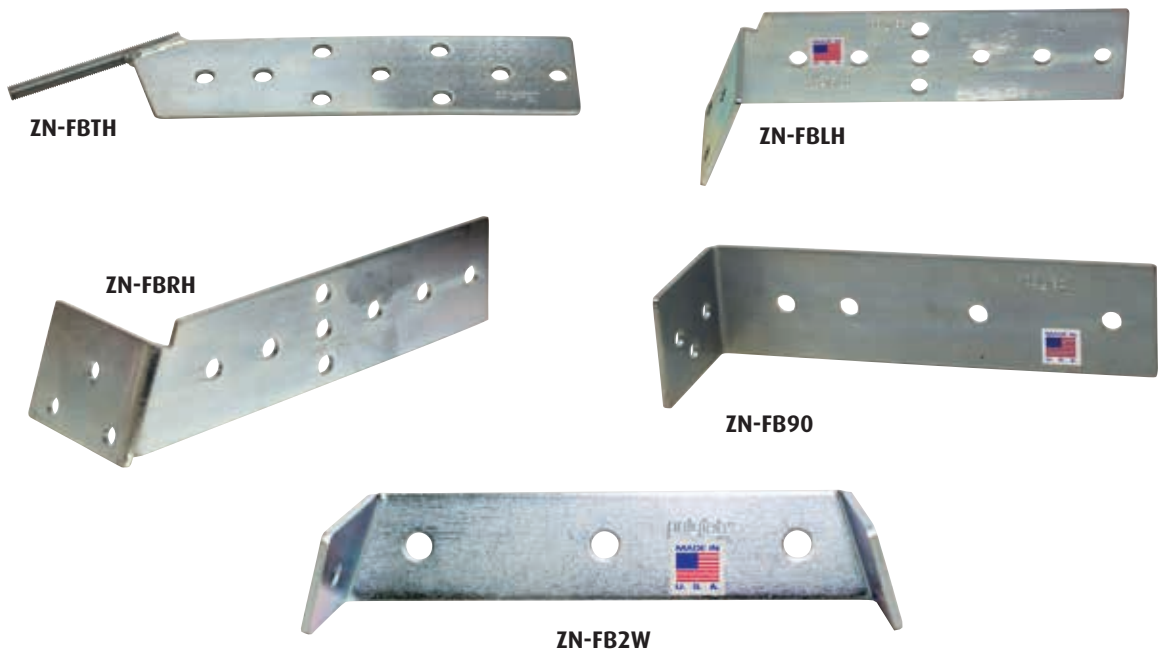


Made from high quality 304 stainless steel.

ITEM #	DESCRIPTION	LENGTH	WIDTH	HEIGHT	INSIDE LOOP DIAMETER	WIRE DIAMETER	BREAK LOAD
		(mm/in)	A (mm/in)	H (mm/in)	C (mm/in)	D (mm/in)	(kg/lbf)
SS-PED-90	3-1/2" (90mm) Diamond Pad Eye AISI 304	90/3.54	57/2.24	29/1.14	18/0.71	8/0.31	4000/8818
SS-PED-100	4" (100mm) Diamond Pad Eye AISI 304	100/3.94	60/2.36	35/1.38	20/0.79	10/0.39	6000/13228

FASCIA BRACKETS

Standard safety factor for working load is 1/4 of breaking load



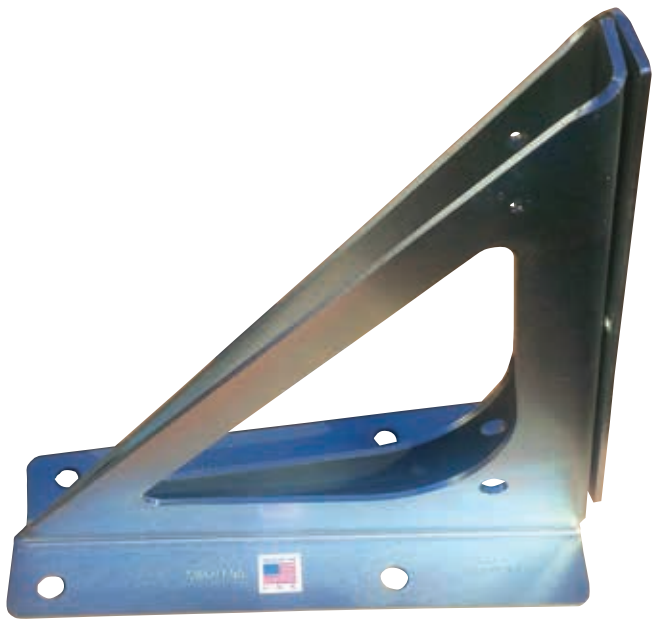
Made from zinc plated steel in the USA.

ITEM #	DESCRIPTION	WIDTH	LENGTH/ LENGTH 2	THICK- NESS	COATING	HOLE
		(in)	(in)	(in)		(in)
ZN-FBTH	Polyfab Fascia Bracket w/ 12 mm threaded rod	3	14	3/16	zinc	1/2
ZN-FBLH	Polyfab Fascia Bracket (for 20 deg rather angle)-Left	3	12/4	3/16	zinc	1/2
ZN-FBRH	Polyfab Fascia Bracket (for 20 deg rather angle)-Right	3	12/4	3/16	zinc	1/2
ZN-FB90	Polyfab Fascia Bracket (right angle for flat roofs)	3	12/4	3/16	zinc	1/2
ZN-FB2W	Polyfab Fascia Bracket (2 Way)	2	10/3	3/16	zinc	1/2



DECK POST BRACKET SYSTEM

Standard safety factor for working load is 1/4 of breaking load



This new bracket system is designed for lower cost and easier installation of smaller shade sails on wood decks or concrete patios. Using a locally sourced 4" x 4" or 4" x 6" wooden post and eye bolt, this system will enable the customer to install cantilevered attachments without the need for digging holes or pouring concrete footing. Will also fit metal posts or round posts. Engineering report is available—ask your Polyfab distributor.

Made from zinc plated steel in the USA.

ITEM #	DESCRIPTION	LENGTH	HEIGHT	ANGLE	THICKNESS	COATING	LARGE HOLES
		(in)	(in)		(in)		(in)
ZN-ZB14	Polyfab Pro Deck Post Bracket (2 pieces per set) One left and one right	13.5	13.35	170 degrees	3/16	Zinc	0.625



CORNER DISKS

The Corner Disk is made for Polyfab USA by a shade shop in Brisbane, Queensland.

ITEM #	DESCRIPTION
--------	-------------

AL-DISK-06	5-7/8" diameter Polyfab Corner Disk w/ 2 plates, plastic spacer and 5 SS bolts+nuts, stamped aluminum	Suits Cable (mm)
		6mm



SAFETY CABLES

Standard safety factor for working load is 1/4 of breaking load



Made from high quality 316 Marine grade stainless steel in the USA.

ITEM #	DESCRIPTION	CABLE LENGTH	MAXIMUM SHACKLE PIN TO FIT
		(in)	(mm/in)
SS-SC-15	Polyfab Pro Safety Cable looped with thimble on each end	15	10 3/8"

Our extensive Polyfab range has you covered

APPROVED BY
**MELANOMA
INTERNATIONAL
FOUNDATION**

Premium shade sail products
from POLYFAB USA

15 year
LIMITED WARRANTY

Architec 400
EXTRA HEAVY DUTY
KNITTED SHADECLOTH

10 year
LIMITED WARRANTY

Comtex
EXTRA HEAVY DUTY
KNITTED SHADECLOTH

10 year
LIMITED WARRANTY

Polytex
HEAVY DUTY KNITTED SHADECLOTH

10 year
LIMITED WARRANTY

FR Comshade
PREMIUM FLAME RETARDANT
KNITTED SHADECLOTH

10 year
LIMITED WARRANTY

10 year
LIMITED WARRANTY

15 year
LIMITED WARRANTY

up to
99.7%
UV protection

**Comshade
xtra**
THE WORLD'S MOST UV
PROTECTIVE SHADECLOTH

**Polyfab Pro® Shade Sail
Hardware**

**Polyfab Pro® Shade Sail
Edge Webbing™**

**Polyfab Pro® Shade Sail
Cleaner**



www.PolyfabUSA.com

